



Form&Matter

The Sustainable Development Goals Network

There is little trust within the international aid process, which means billions of dollars don't reach the areas that need it most.

- There is often little transparency within the aid process.
- There is often a wide disparity between the efficacy of aid organizations on the front lines of major causes.
- Some organizations are more genuinely philanthropic than others.
- Little ability of aid organizations to keep donors involved in their processes in the long term.
- The general public doesn't have time/energy to research the many organizations on the front lines of a disaster or a cause.

There is a reason there little trust with the international aid process - even world-recognized organizations exploit tragedy.

DELMARVA PUBLIC RADIO ON AIR NOW Delmarva Public Radio

SPECIAL SERIES
special report: the american red cross

In Search Of The Red Cross' \$500 Million In Haiti Relief

June 3, 2015 - 4:36 PM ET
Heard on All Things Considered



Listen 19:25 Queue Download Embed Transcript

When a devastating earthquake leveled Haiti in 2010, millions of people donated to the American Red Cross. The charity raised almost half a billion dollars. It was one of its most successful fundraising efforts ever.

The American Red Cross vowed to help Haitians rebuild, but after five years the Red Cross' legacy in Haiti is not new roads, or schools, or hundreds of new homes. It's difficult to know where all the money went.



DELMARVA PUBLIC RADIO ON AIR NOW Delmarva Public Radio

SPECIAL SERIES
special report: the american red cross



4:24

Queue

Download

Embed

Transcript

Report: Red Cross Spent 25 Percent Of Haiti Donations On Internal Expenses

June 16, 2016 - 5:01 AM ET
Heard on Morning Edition



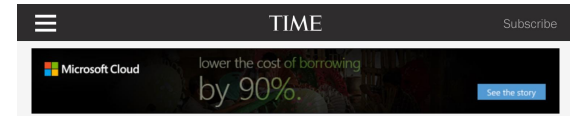
Haitians outside a Red Cross field hospital in Carrefour, Haiti, on Dec. 14, 2010, 11 months after a magnitude 7.0 earthquake hit the country's capital, Port-au-Prince.

Thony Belizaire/AP/Getty Images

SWEDO

“Stuff We Don't Want”

Foreign aid circles employ the cynical acronym SWEDOW (stuff we don't want) to describe initiatives like Jason Sadler's 1 Million T-Shirts project.



Bad Charity? (All I Got Was This Lousy T-Shirt!)

By Nick Wadhams / Nairobi | Wednesday, May 12, 2010

f Like (218) t Tweet G+1 | 1 in Share 5 Read Later

In the history of foreign aid, it looked pretty harmless: a young Florida businessman decided to collect a million shirts and send them to poor people in Africa. Jason Sadler just wanted to help. He thought he'd start with all the leftover T-shirts from his advertising company, I Wear Your Shirt. But judging by the response Sadler got from a group of foreign aid bloggers, you'd think he wanted to toss squirrels into wood chippers or steal lunch boxes from fourth-graders.

"I have thick skin, I don't mind, but it's just the way they responded — it was just, 'You're an idiot, here's another stupid idea, I hope this fails,'" Sadler, 27, tells TIME. "It really was offensive because all I'm trying to do is trying to make something good happen and motivate people to get off their butts, get off the couch and do something to help."

(See TIME's photo-essay "Commerce Comes to the Aid of Haiti.")

Little did Sadler know he had stumbled into a debate that is raging in the aid world about the best and worst ways to deliver charity, or whether to give at all. He crashed up against a rather simple theory that returned to prominence after aid failures following the 2004 Asian tsunami and 2010 Haiti earthquake: wanting to do something to help is no excuse for not knowing the consequences of what you're



Spencer Platt / Getty Images
A Masai teen in Kisumu, Kenya, wears a T-shirt featuring soccer player Didier Drogba. Donations of used clothes can have an adverse effect on fragile economies

Buy One Give One

TOMS Shoes's "BOGO"

Three months after Jason abandoned sending a million shirts to Africa, TOMS celebrated sending a million pairs of shoes to the underprivileged. It continues to do so.

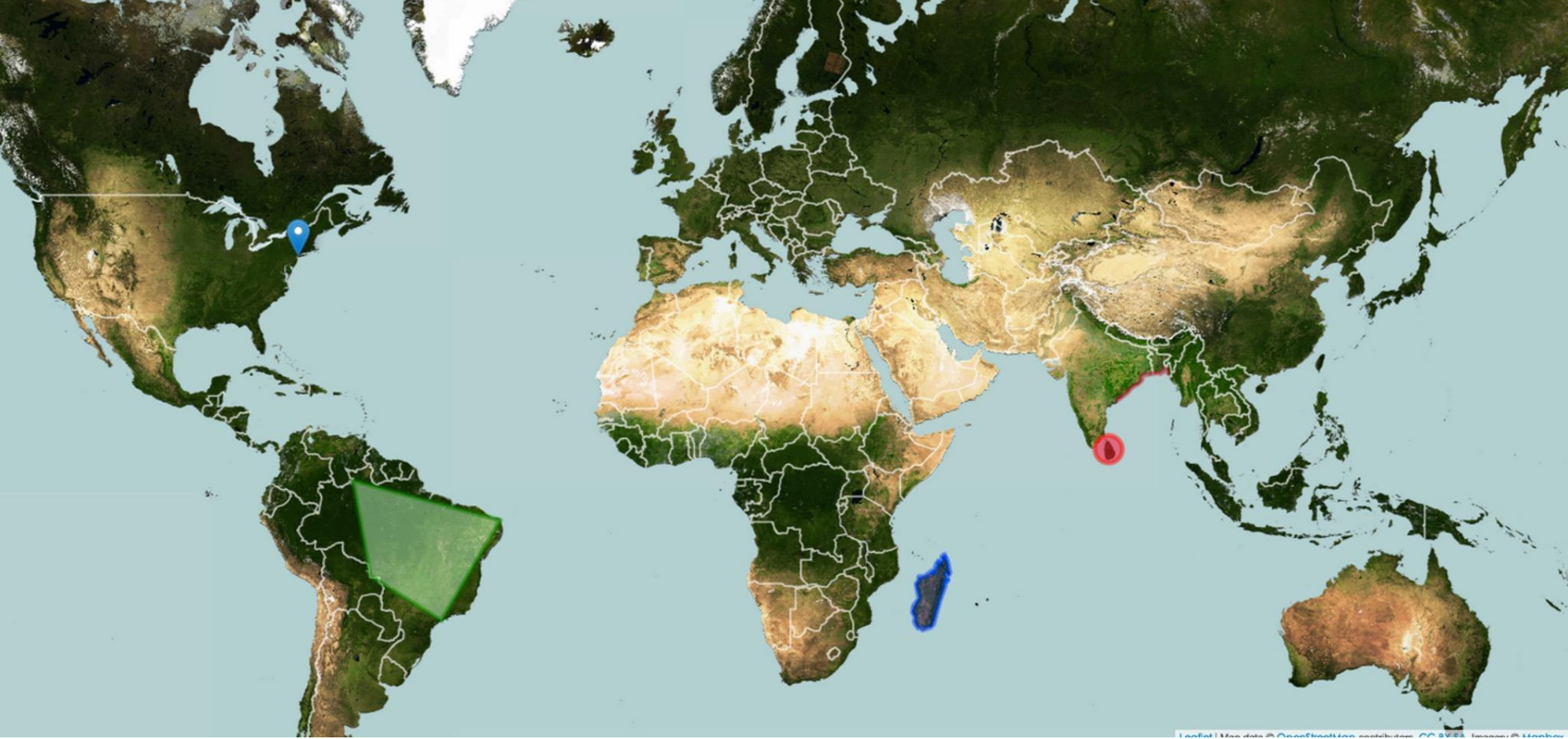
While there are possibly more people in the world who need shoes than might need shirts (though this is debatable), TOMS can be (and has been) broadly criticised for the same kinds of unintended consequences of dumping shoes in places where people might otherwise be employed to make them.

Donor Fund Restrictions

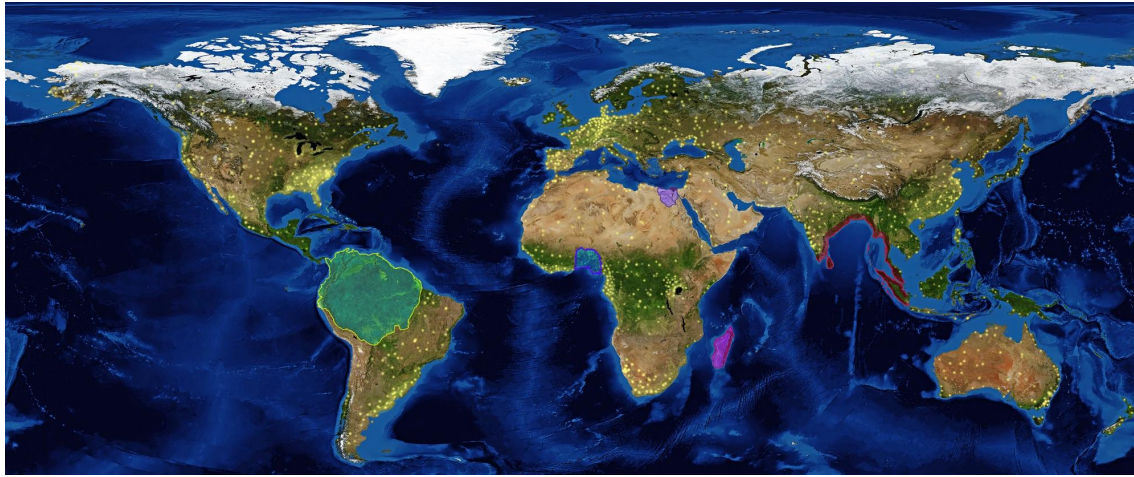
Where a significant portion of the cash provided for such assistance must be spent on goods and services provided by suppliers from the donating country.

- Sometimes wealthy nations that deliver foreign assistance to Africa add a caveat: the goods and services must be purchased from the donor country. Shortly after, the earmarked aid often leaves the country the country in the form of salaries, per diem allowances, and “hardship pay.”
- Tying aid in this way is estimated to increase the cost of intervention by 15-30%
- A classic example is the Mozambique floods of 2000, when “tied” American aid compelled flood workers to procure, then ride, Harley-Davidsons from outpost to outpost, instead of dirt bikes that cost 1/10 the price and were significantly better suited for the environment.

How do we transcend the current aid process to create a system that is transparent, trusted, fast acting, able to be adjusted in real time, and supports long term organic relations between donors and recipients?



All members will have access to Form & Matter's Emergency Disaster Response Map and can contribute aid directly to the frontlines through the world's most effective aid organizations.



Members can see their direct impacts on the planet through the charity raised from their purchases, their direct donations, and participating in initiatives.

Members can also visualize the greater collective impact they've generated along with their referrals and their referrals and so on.



You can visualize the aid that you and all of the members of your network are responsible for.

Create crowdfunding campaigns for specific projects or general operations.



Sustainable Office Refurbishment By The Bureau of Land Management

To lower ongoing costs and environmental impact, the Bureau of Land Management has begun a \$500,000 field office refurbishment project in Idaho, Wyoming, Montana, and Colorado. You can help BLM become more sustainable and accessible!

14,582 Supporters
\$146,321 Pledged of \$500,000 Goal
213 Days until Project Launches

10 ★ 222 23 44 121 98
FAVORITE PIN LIKE TWEET PLUS SHARE



Sky Light & Eco Roofing
Using new eco skylight over 7,000 skylight hours can be...

\$15,000 Pledged
\$50,000 Goal

Support



Wood & Eco Materials
BLM has committed to using only sustainability sourced and rec...

\$15,000 Pledged
\$50,000 Goal

Support



Natural Grass Roofing Insulation
Grass and soil roofing can et...

\$15,000 Pledged
\$50,000 Goal

Support



Increase WiFi Hotspots and Connection Speed 2x
Increasing the internet connec...

\$15,000 Pledged
\$50,000 Goal

Support



Smart Cooling & Office Ventilation
Smart rooms will ensure that...

\$15,000 Pledged
\$50,000 Goal

Support



Expand Sidewalks & Wheelchair Accessibility
Adding Blue Trail offices more...

\$15,000 Pledged
\$50,000 Goal

Support



Media Classroom Renovation Needed By North Middle School

THIS HOLIDAY SEASON, DO SOMETHING SPECIAL FOR YOUR LOVED ONE. START BY BUYING TONS OF OUR STUFF - YOU CAN GIVE IT TO SPARTAN! BECAUSE YOU ARE THE ONE TRUE KING. THAT'S RIGHT, YOU'RE LEONIDAS!

10 ★ 222 23 44 121 98
FAVORITE PIN LIKE TWEET PLUS SHARE



A George II Ohwood Two Light Sconces, c. 1850
By Tom & Heather

\$15,000.00

Share



Loop Chair
By Tom & Heather

\$2,000.00

Share



Knitting Loop Wood Basket
By Tom & Heather

\$100

Share



Log Wood Basket
By Tom & Heather

\$100

Share



Set of Three Coned Italian Stone Statues of the Seasons
By Tom & Heather

\$23,000.00

Share



A Pair of Adam Style Three Light Sconces, c. 1850
By Tom & Heather

\$15,000.00

Share



SAGE-GROUSE AND SAGEBRUSH CONSERVATION

As the fall and the 2015 work on saving these two cool birds, they are looking for your contribution with the goal of providing essential habitat for these birds. We're looking for your support!

141★ 231 391 23 23



14,582 Supporters
\$146,321 Pledged of \$500,000 Goal
213 Days until Project Launches

Project Description
About the Project
How to Support
Project Updates
Project Photos
Project Videos
Project Documents
Project Questions
Project Answers

Follow and Support The
Bureau of Land Management
BLM



Graphic showing Greater Sage-grouse planning strategy subregions/ES boundaries.



This graphic shows the Greater Sage-grouse planning strategy subregions/ES boundaries. The map displays the distribution of Greater Sage-grouse across the western United States, with subregions and ES boundaries highlighted. The map is color-coded to show different planning areas. The text below the map provides details about the planning strategy and the boundaries shown.



Each member can track their impact and their collective impact with their referrals and their referrals and so on.

Members also receive tax writeoffs for the impact they are directly responsible for.

Because Of You 10 Trees Have Been Planted



Thank You For Being The Cause Of This Plantary Aid!

	Aid Generated By You	Because Of You
Total Aid:	\$4.24	\$10.24
Doctor's Without Borders:	\$1.00	\$11.00
Polar Bears International:	\$1.00	\$1.00
Surfrider Foundation:	\$1.00	\$9.00
The Conservation Fund:	\$7.60	\$7.60
The Shade Fund:	\$2.34	\$2.34
Trees Planted:	12	32
Leopards Saved:	3	3
Polar Bears Saved:	2	4
Sea Turtle Nests Introduced Into The Wild:	11	11
Pounds Of Carbon Offset:	2.2	8.2
Scholarships Funded:	3	6

PROFILE SHOWCASES STOREFRONT PROMOTIONS

KALANI PHOTOGRAPHY

Aloha!

Lorem ipsum dolor sit amet, consectetur adipiscing elit. Pellentesque id dui lectus, vel aliquam nisl. Sed urna nulla, accumsan at amet. Nisique ut, adipiscing sit amet. Proin mi temp. elementum acc. adipiscing. tempora nisi, accumsan nisi nisi. Quis elementum nisi. Sed ac. Nisi ut temp. volutpat suscipit. Pellentesque varius laoreet odio, ac faucibus inquis tempore nec. Cras ut tortor tempus turtur feugiat dapibus. Aliquam erat volutpat. In feugiat suscipit purus a dictum. Pellentesque dapibus tincidunt nisi sed auctor.

Tax Receipt For June 2012
\$43.21

Thank You For Being The Cause Of This Plantary Aid!

	Aid Generated By You
Total Aid:	\$4.24
Doctor's Without Borders:	\$1.00
Polar Bears International:	\$1.00
Surfrider Foundation:	\$1.00
The Conservation Fund:	\$7.60
The Shade Fund:	\$2.34
Trees Planted:	12
Leopards Saved:	3
Polar Bears Saved:	2
Sea Turtle Nests Introduced Into The Wild:	11
Pounds Of Carbon Offset:	2.2
Scholarships Funded:	3

Support The Planet Further On The Nuvala Network

You are currently helping Doctor's Without Borders

Invite friends and raise money for your charity

Create your own storefront

Customer Favorites

View other customers' favorite products that are helping to change the world.

Newly Added

Show Kalani Photography's most recent contributions to the Nuvala Network.

Invite Your Friends

Show Kalani Photography and the Nuvala Network with your friends to help save the planet.

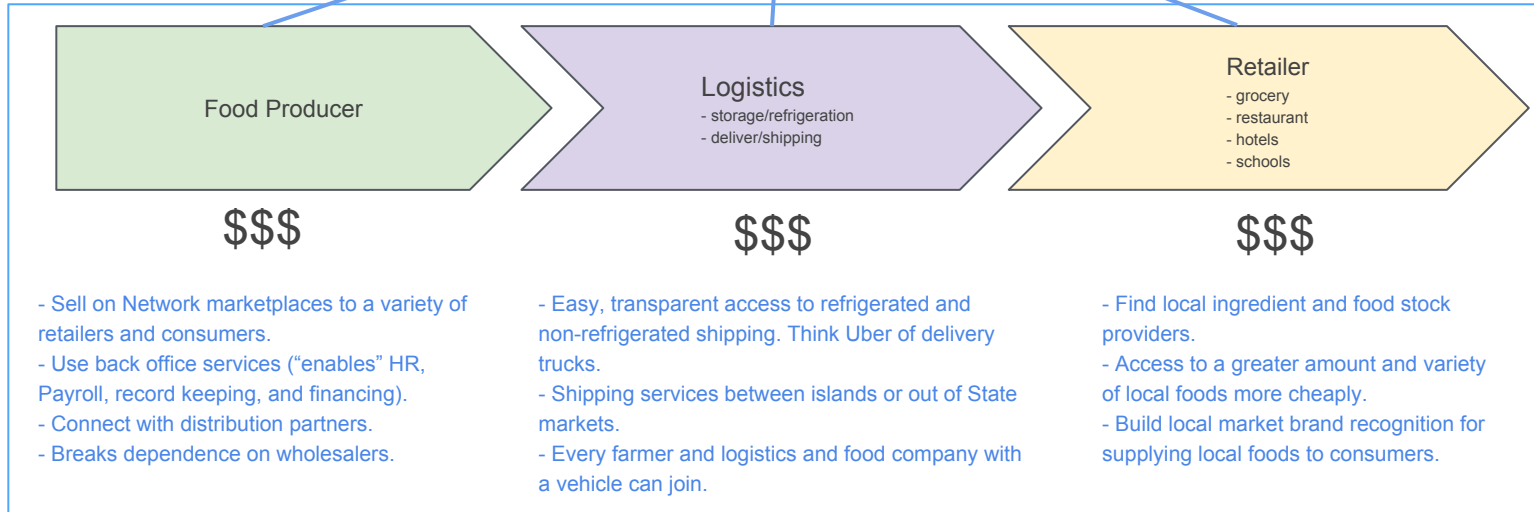
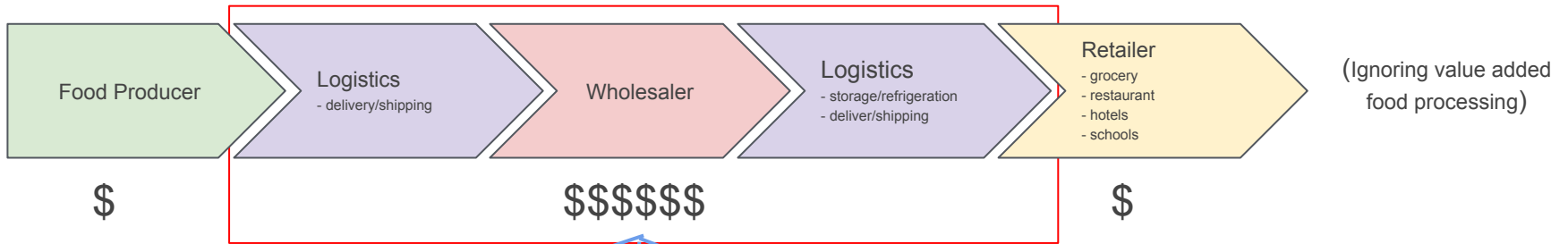
KALANI PHOTOGRAPHY

© 2012 Kalani Photography. All rights reserved.

Form & Matter's mission is to bring together
community-based & locally sustainable
solutions that work in every community



Supply Chain Disruption




**Form & Matter's
Community
Supply
Chain**

Form & Matter's Software Can Transform the Operations of a Variety of Community-Based Organizations

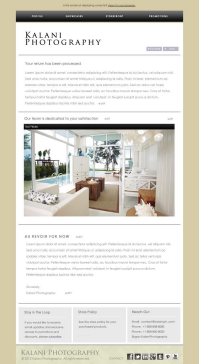
Form & Matter is solving food deserts through cutting edge, easy-to-use software, which gives any mission driven company the speed and low cost execution they need to streamline their sales, connect with local resources, amplify their vision, and solve the most important local food challenges.

Because Of You 10 Trees Have Been Planted



Thank You For Being the Cause Of This Plantary Aidi!

	Aid Generated By You	Because Of You
Total Aid:	\$4.24	\$10.24
Doctor's Without Borders:	\$1.00	\$11.00
Fodor's International:	\$1.00	\$1.00
SurfSide Foundation:	\$1.00	\$1.00
The Conservation Fund:	\$7.40	\$7.40
The Shade Fund:	\$2.34	\$2.34
Trees Planted:	12	32
Concepts Saved:	3	3
Water Saved Liters:	2	4
Sea Turtle Hatch Introduced Into The Wild:	11	11
Found's Of Carbon Offset:	2.2	8.2
Schools/has Funded:	3	4



Kalani Photography

Your World Has Been Transformed

BECAUSE OF YOU 10 TREES HAVE BEEN PLANTED

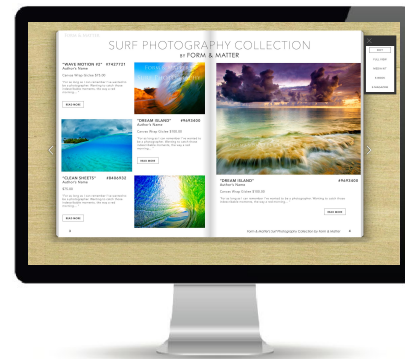
Thank You For Being the Cause Of This Plantary Aidi!

	Aid Generated By You	Because Of You
Total Aid:	\$4.24	\$10.24
Doctor's Without Borders:	\$1.00	\$11.00
Fodor's International:	\$1.00	\$1.00
SurfSide Foundation:	\$1.00	\$1.00
The Conservation Fund:	\$7.40	\$7.40
The Shade Fund:	\$2.34	\$2.34
Trees Planted:	12	32
Concepts Saved:	3	3
Water Saved Liters:	2	4
Sea Turtle Hatch Introduced Into The Wild:	11	11
Found's Of Carbon Offset:	2.2	8.2
Schools/has Funded:	3	4



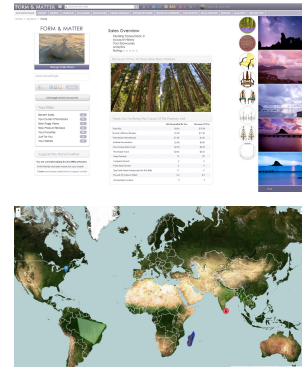
SURF PHOTOGRAPHY COLLECTION
by FORM & MATTER

FORM & MATTER
SURF PHOTOGRAPHY



SURF PHOTOGRAPHY COLLECTION
by FORM & MATTER

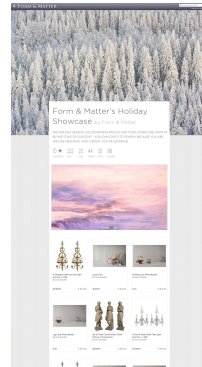
FORM & MATTER
SURF PHOTOGRAPHY



FORM & MATTER

World Map

Dashboard with various data points and charts.



Form & Matter's Holiday Showcase

Website featuring holiday-themed photos and products.



Mr. Song now has a system that helps him keep his business going



Form & Matter's
Easy To Use Software



ESL Language Assistance



New Clients & Streamline Sales



Organic & Ethical Certifications



Record Keeping



HR / Payroll / Taxes



Online Farmer Forum & Best Practices Database



Food Donation & Tax Writeoffs



Access to Online Governmental, NGO, and Community-Based Resources



Community-Based Financing

How Form & Matter Will Shift Global Giving

